



CLEMENTS
HABBA



For Sale

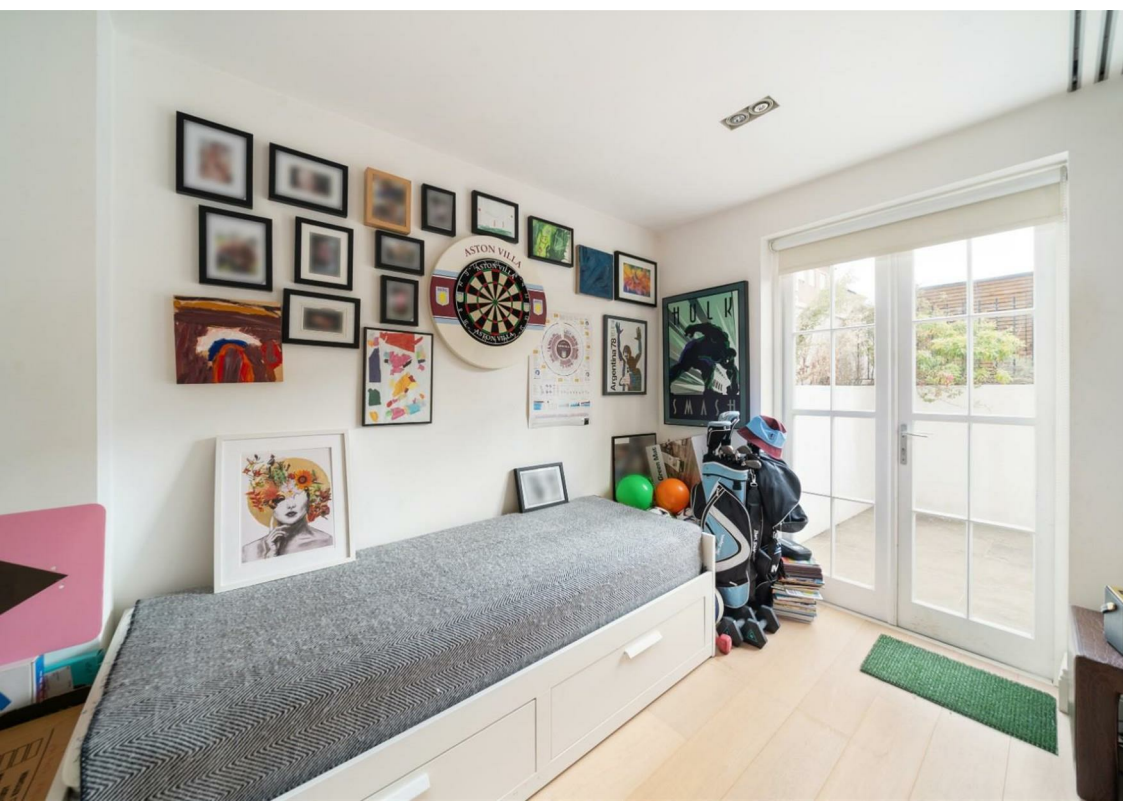
Heathfield Terrace, Chiswick, London

£725,000

Leasehold - Share of Freehold







Summary Description

This beautiful two-bedroom apartment, with private parking and south facing garden, is part of a stunning conversion of two elegant adjoining Grade II listed Georgian buildings overlooking Turnham Green in central Chiswick. Share of Freehold. Chain Free. EPC C.

- Stunning Conversion of Grade 2 Listed Georgian Building
- Private South Facing Garden
- Share Of Freehold
- Underfloor Heating
- Chain Free
- 2 Bedrooms
- Private Parking Space
- Private Entrance
- Prime Central Chiswick Location
- EPCC

HEATHFIELD TERRACE

APPROX. GIA: 662 SQ. FT/61.47 SQ.M



FOR ILLUSTRATION PURPOSES ONLY

THIS FLOOR PLAN SHOULD BE USED AS A GENERAL OUTLINE FOR GUIDANCE ONLY AND DOES NOT CONSTITUTE IN WHOLE OR IN PART AN OFFER OR CONTRACT.
ANY INTENDING PURCHASER OR LESSEE SHOULD SATISFY THEMSELVES BY INSPECTION, SEARCHES, ENQUIRIES AND FULL SURVEY AS TO THE CORRECTNESS OF EACH STATEMENT.
ANY AREAS, MEASUREMENTS OR DISTANCES QUOTED ARE APPROXIMATE AND SHOULD NOT BE USED TO VALUE A PROPERTY OR BE THE BASIS OF ANY SALE OR LET.

**CLEMENTS
HABBA**